

# Not fit for the Kingdom

The Dog & The Sow

# Looking Back

- Lots wife
- Sick man for 38 years
- Peter
- Mark
- Simeon sorcerer
- Laodiceans

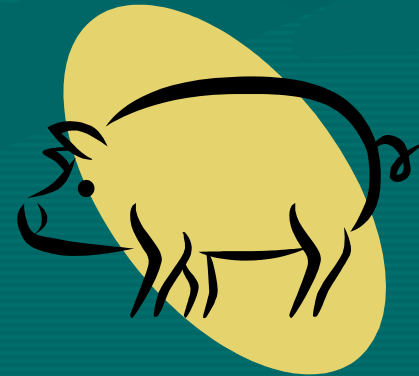


# The Dog & The Sow

- Dog returns to that which made him sick in the first place.



- The sow returns to wallowing in the mire that made her unclean.



## II Peter 2:21,22

- For it would have been better for them not to have known the way of righteousness, then having known it, to turn away from the holy commandment delivered to them. But it has happened to them according to the true proverb: “*A dog returns to his own vomit,*” and, “*a sow, having washed, to her wallowing in the mire.*”

# Turning back

- Demas
  - II Timothy 4:10
- Ananias & Sapphira
  - Acts 5:1-11
- Judas Iscariot
  - Matthew 26:14-16
- Evil spirit
  - Matthew 12:43-45



# Turning back . . . Causes?

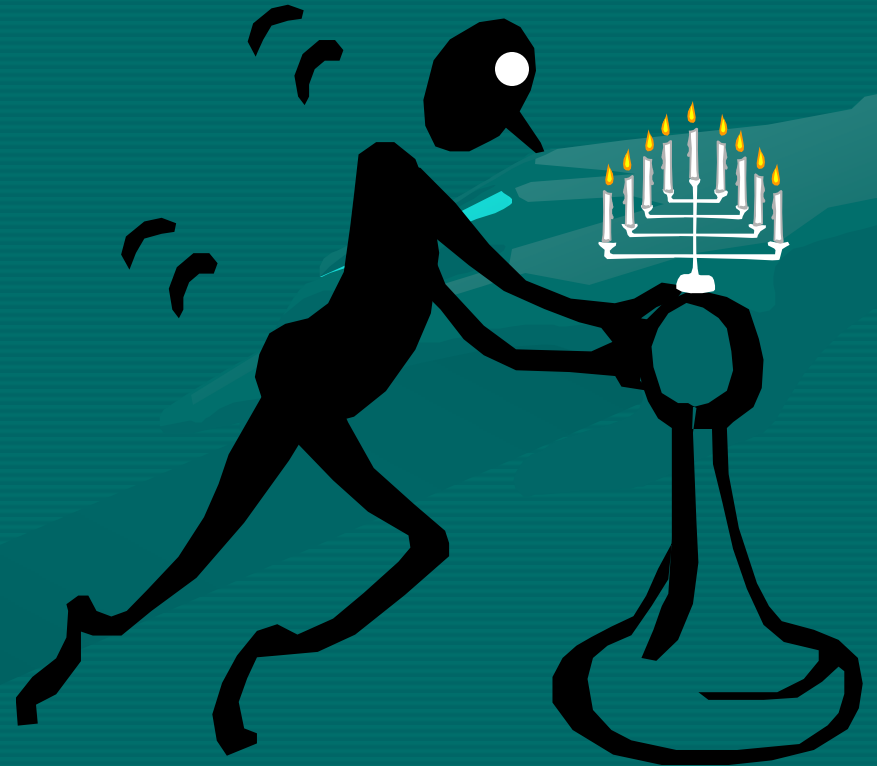
- Lot's wife - ?
- Peter – pride
- Judas - greed
- Ananias & Sapphira – honor of men & greed
- Demas – love of the world
- Worries/cares/riches choke word
- Context of II Peter 2 – false teachers

# Pressing On... Test of Faithfulness

- Corinthians turned to God and remained worldly
- Hebrews turned to God and did not mature
- Galatians turned to God and were pulled back to Judaism
- Colossians turned to God and were tempted to turn away by philosophy, persuasive words and empty deceit
- Thessalonians turned to God and told it was in vain, having missed the resurrection

# Pressing On

- Philippians 1:10, 2:14, 3:7,12
- Hebrews 2:8, 4:1, 4:11,14
- Matthew 11:25-30
- Titus 3:8



# Fit for the Kingdom

- Count the cost
- Serve in singleness of mind
- Do not look back
- Get rid of that which makes you ill & unclean
- Don't be the unfaithful servant in time of the King's need
- Press on toward the goal



